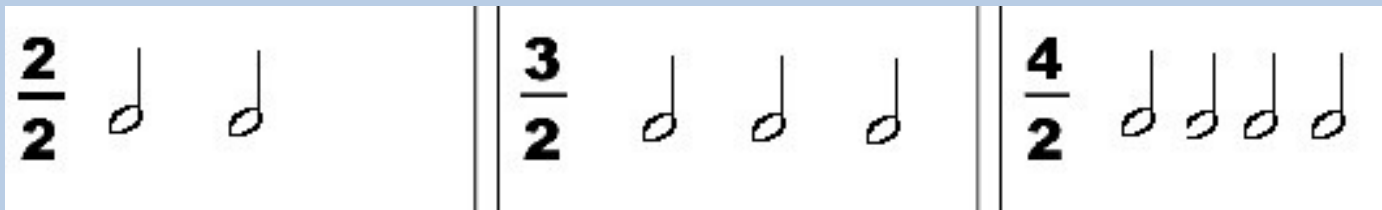


**Duración:**  
Compás simple unidad de tiempo la blanca  
Compás Compuesto

Catalina Sentis Acuña

# Copases Simples

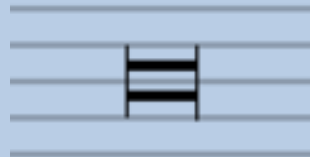
- Unidad de Tiempo Blanca



- La cuadrada: 8 tiempos

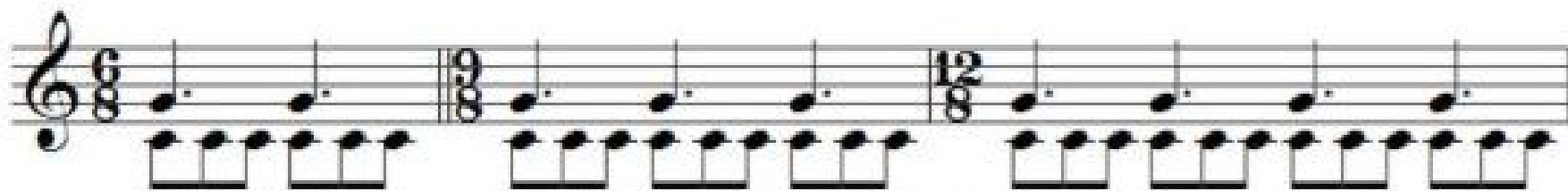
Figura

Silencio



# Compases Compuestos

- En los compases compuestos, cada tiempo se subdivide en *tres*, a diferencia de los simples en que cada tiempo se subdivide en *dos*.



Unidades de tiempo y divisiones ternarias en compases compuestos

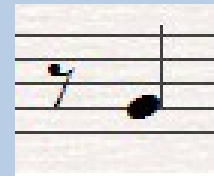
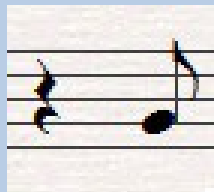
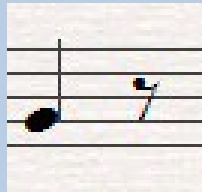
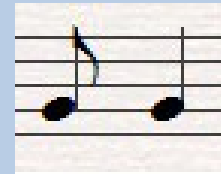
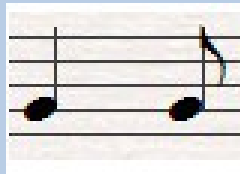
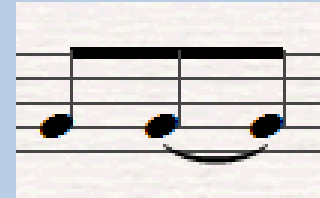
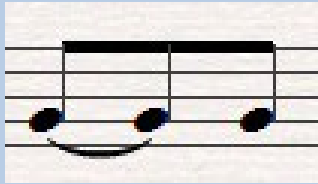
- El pulso se lleva en negra con punto.

**Compases simples con sus unidades de tiempo y divisiones binarias correspondientes.**

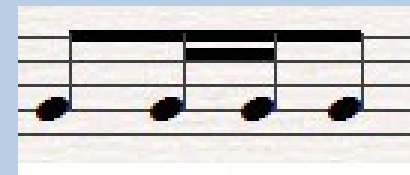
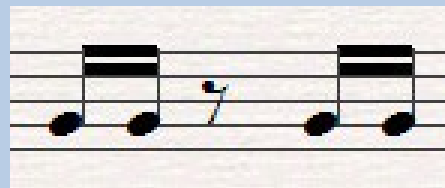
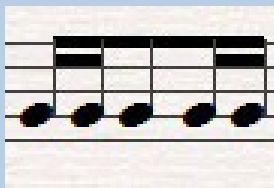
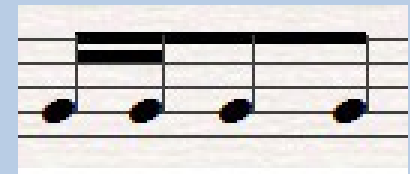
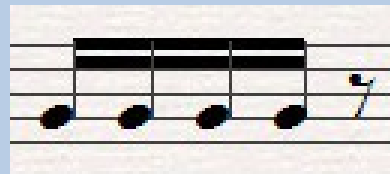
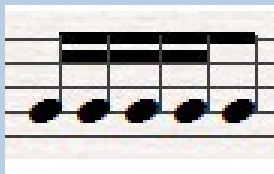
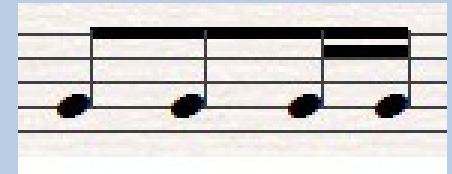
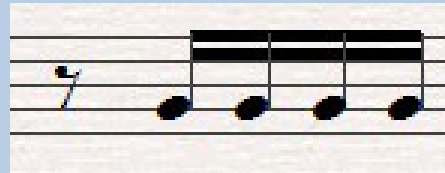
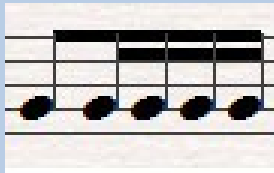
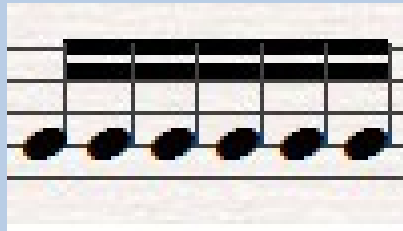
The image displays two rows of musical notation on a light blue background. The top row illustrates simple time signatures: 2/4, 3/4, and 4/4. Each measure is divided into its respective number of equal parts by vertical lines, with arrows pointing down to the corresponding notes in the bottom row. The bottom row shows compound time signatures: 6/8, 9/8, and 12/8. Each measure is divided into its respective number of equal parts by vertical lines, with arrows pointing down to the corresponding notes in the top row. This visualizes how compound time signatures are composed of multiple simple time units.

**Compases compuestos con sus unidades de tiempo y divisiones binarias correspondientes.**

# Figuras en Compases Compuestos



# Figuras con Semicorcheas en Compases Compuestos



# Figuras con Punto y Ligado en Compases Compuestos

